

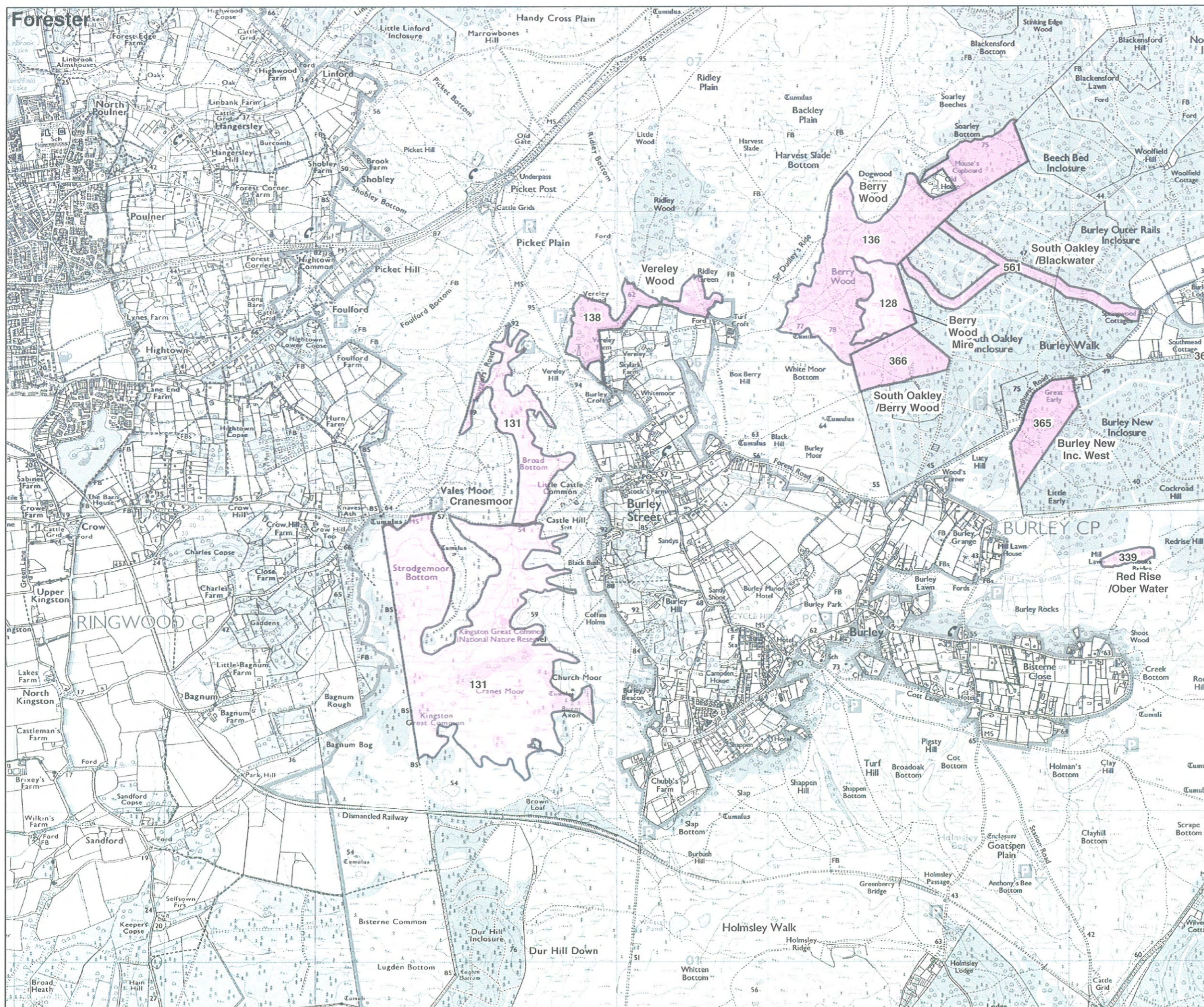


Forestry Commission
England

NEW FOREST

Hampshire Rural Pathfinder Project
Work Site Locations

Fig. 3.6



NGR SU 10/20
Scale: 1:25,000
Date: 4.7.06

This map is based upon Ordnance Survey material with the permission of Ordnance Survey on behalf of the Controller of Her Majesty's Stationary Office Crown Copyright. © Unauthorised reproduction infringes Crown Copyright and may lead to prosecution or civil proceedings. Forestry Commission, 100025498

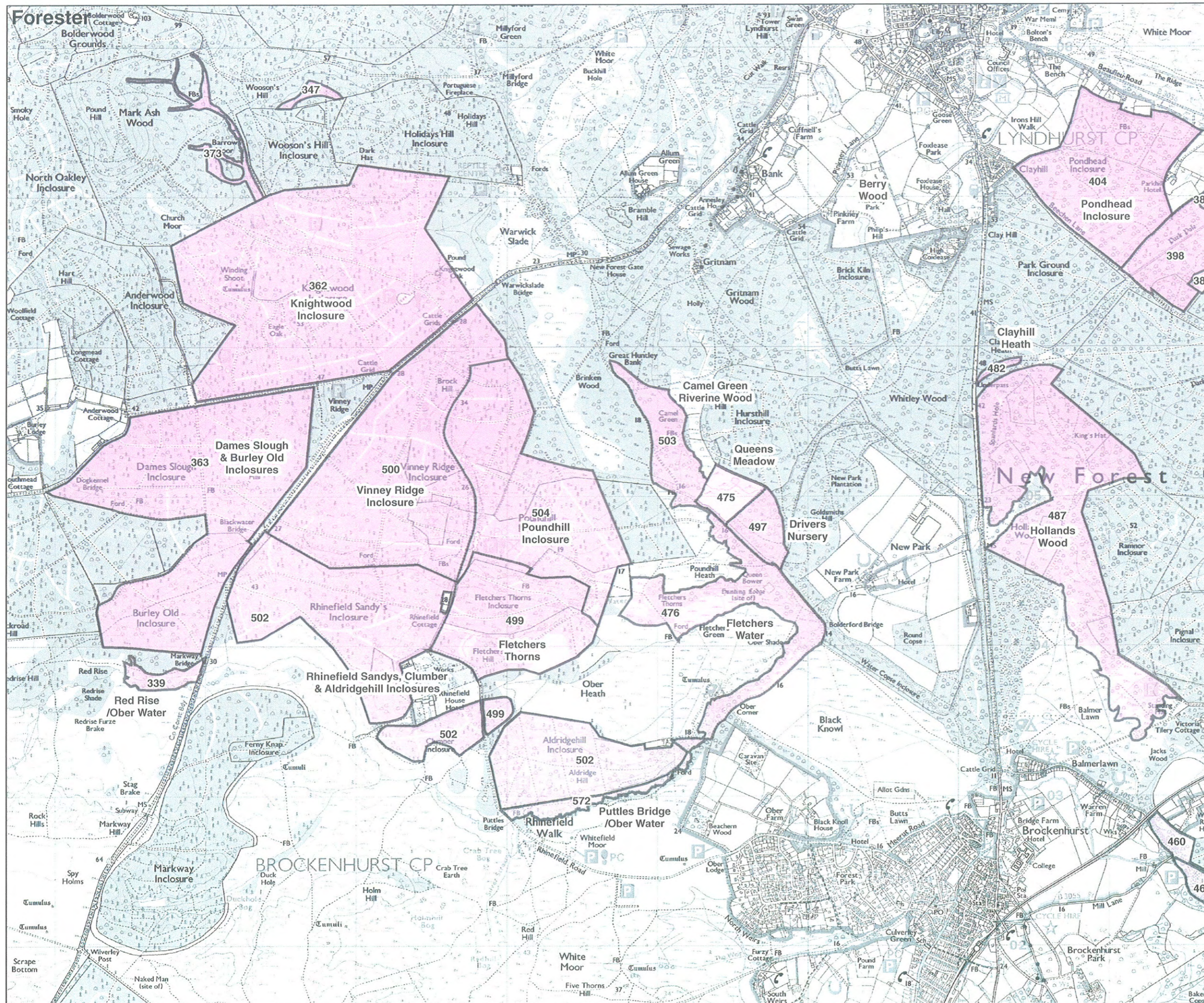


Forestry Commission
England

NEW FOREST

Hampshire Rural Pathfinder Project
Work Site Locations

Fig. 3.7



NGR SU 20/30

Scale: 1:25,000

Date: 4.7.06

This map is based upon Ordnance Survey material with the permission of Ordnance Survey on behalf of the Controller of Her Majesty's Stationery Office. Crown Copyright. © Unauthorised reproduction infringes Crown Copyright and may lead to prosecution or civil proceedings. Forestry Commission. 100025498

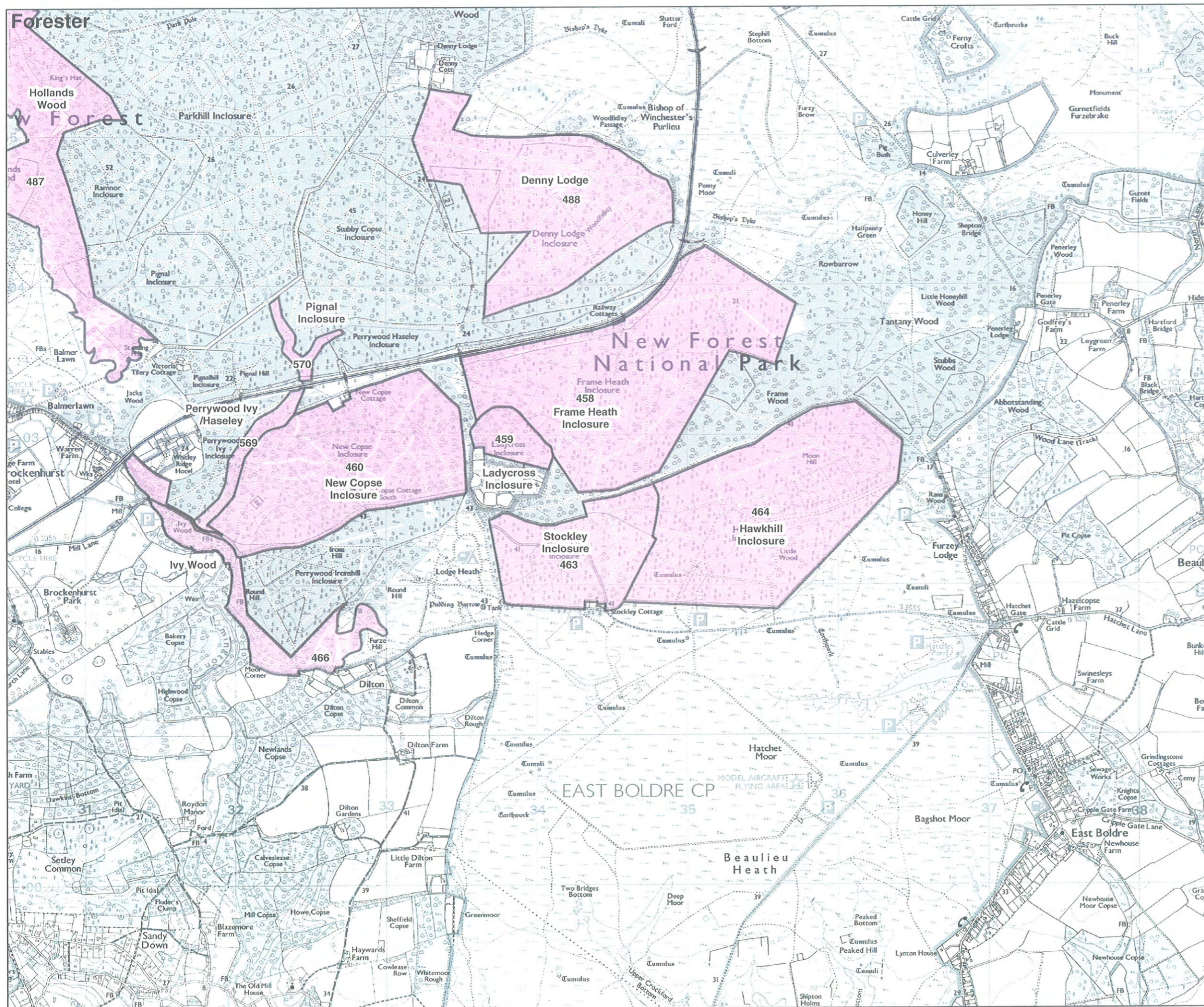


Forestry Commission
England

NEW FOREST

Hampshire Rural Pathfinder Project
Work Site Locations

Fig. 3.8



NGR SU 30
Scale: 1:25,000
Date: 4.7.06

This map is based upon Ordnance Survey material with the permission of Ordnance Survey on behalf of the Controller of Her Majesty's Stationery Office. Crown Copyright. © Unauthorised reproduction infringes Crown Copyright and may lead to prosecution or civil proceedings. Forestry Commission. 100025498

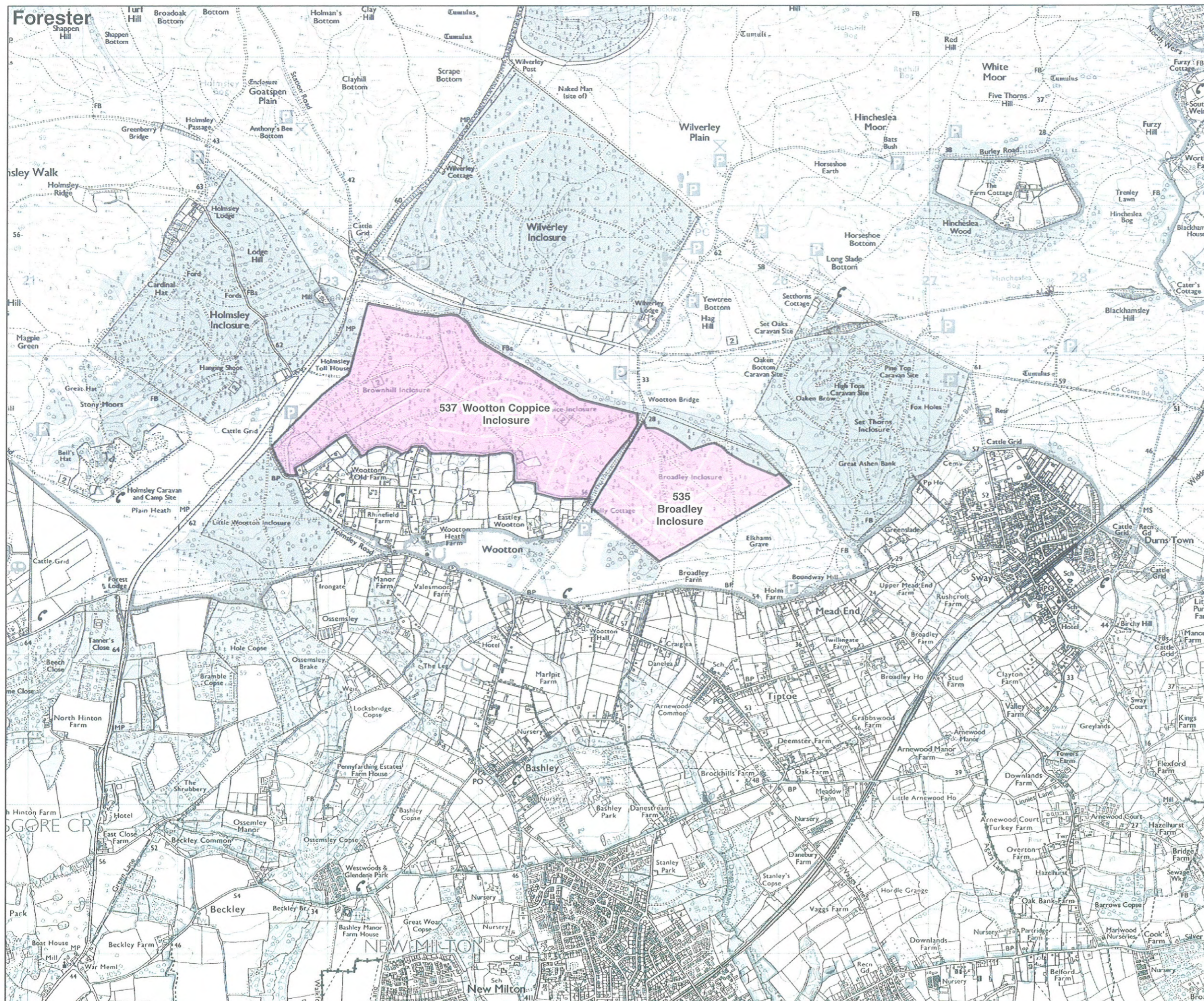


Forestry Commission
England

NEW FOREST

Hampshire Rural Pathfinder Project
Work Site Locations

Fig. 3.9



NGR SU 20/SZ 29

Scale: 1:25,000

Date: 4.7.06

This map is based upon Ordnance Survey material with the permission of Ordnance Survey on behalf of the Controller of Her Majesty's Stationary Office. Crown Copyright. © Unauthorised reproduction infringes Crown Copyright and may lead to prosecution or civil proceedings. Forestry Commission. 100025498

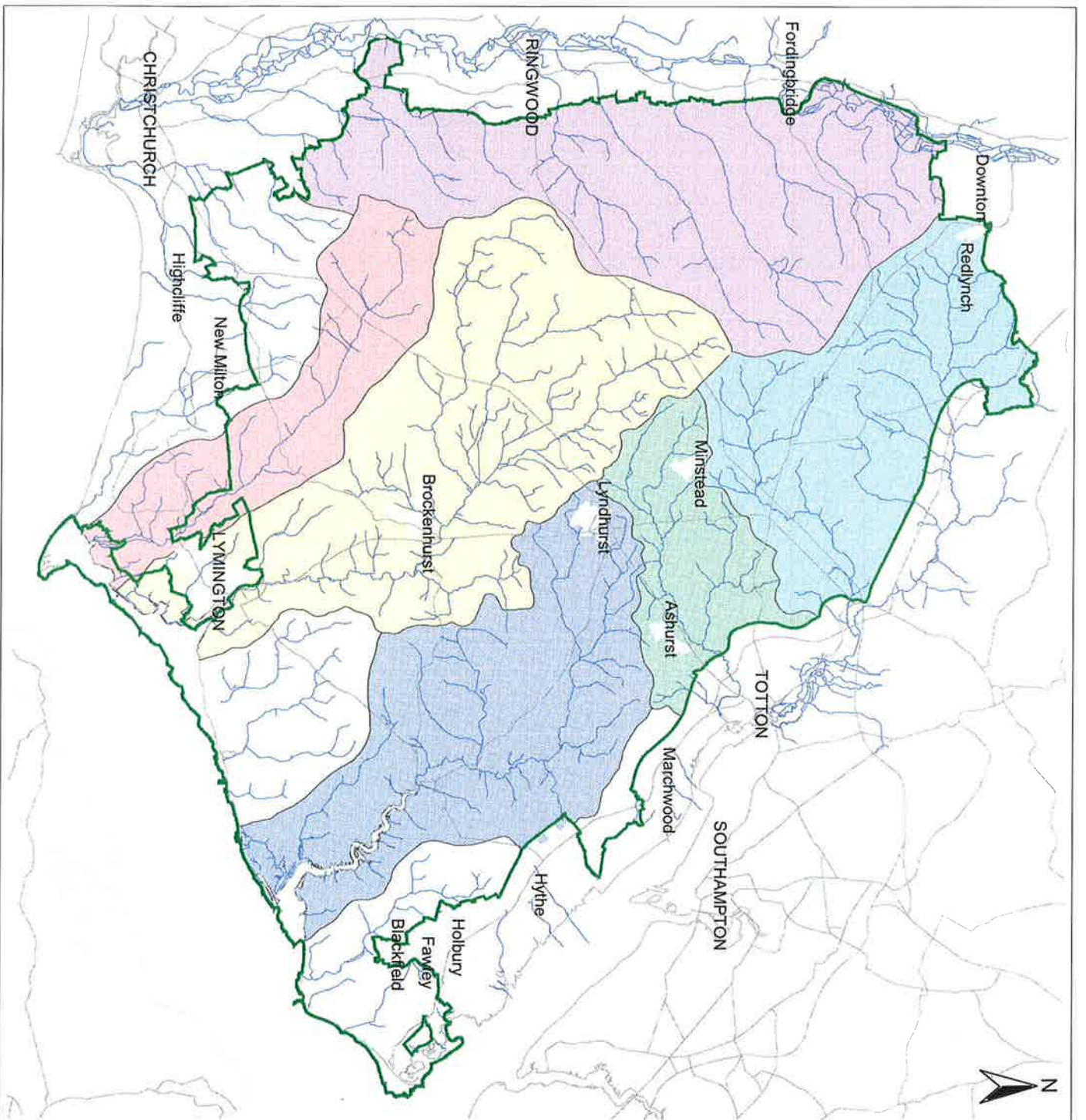


Figure 3.10

River Basins



Legend

- Avon Water
- Bartley Water
- Beaulieu River
- Cadnam River
- Hampshire Avon Tributaries
- Lyminster River
- New Forest National Park

Note:

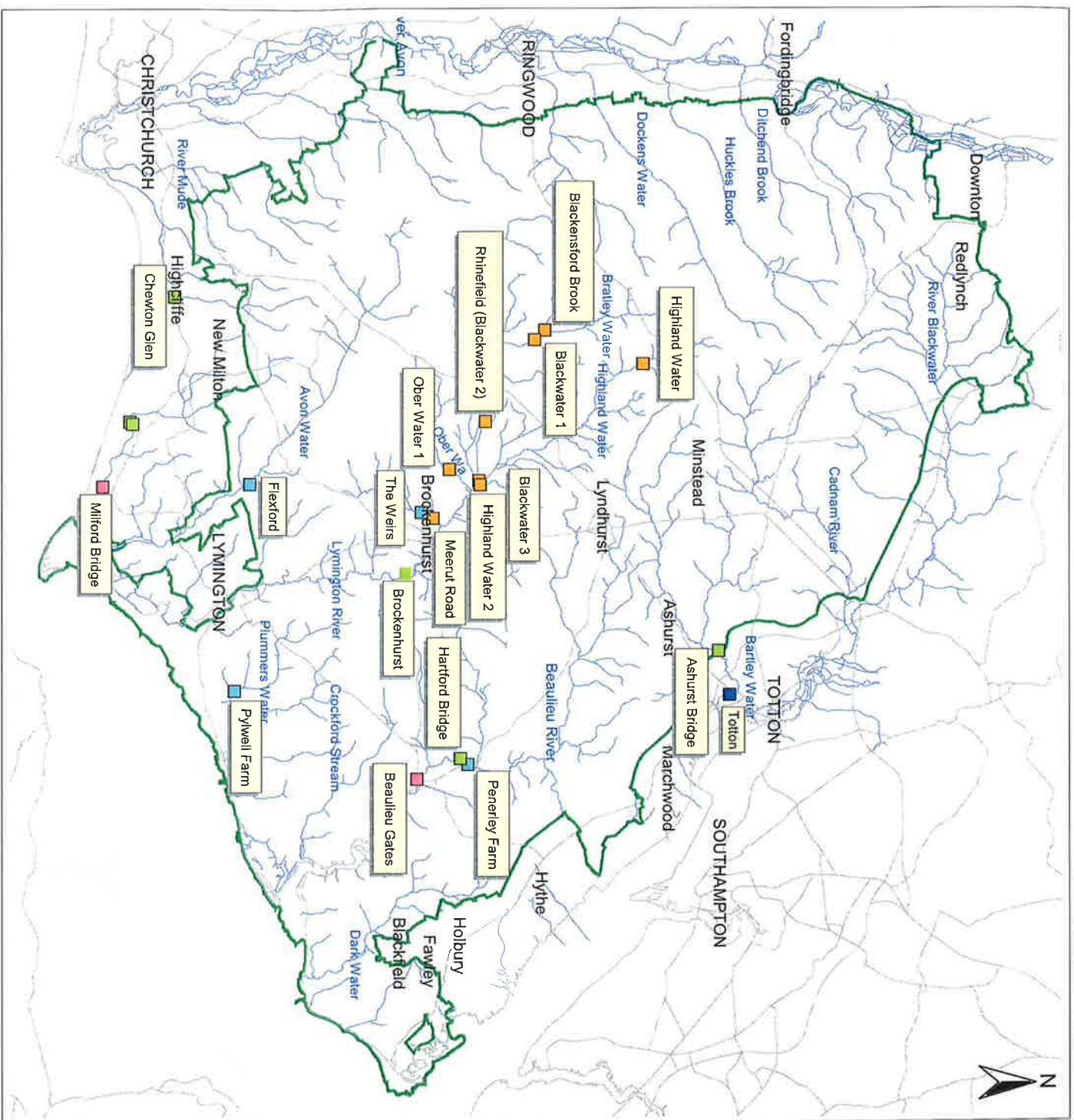
1. River basin boundaries subject to confirmation
2. Boundaries to west and north have been cropped to National Park Boundary

Produced by: Date: 07 February 2006

Scale: 1:130,000 Source: G:\Data\Life Str\Info\Report\Maping

Reproduced from the Ordnance Survey map with the permission of the Controller of Her Majesty's Stationery Office. Crown Copyright Reserved.

Figure 4.10
**Watercourses
and Gauging
Stations**





- Legend**
- Monitoring stations
 - Flow
 - Gauging
 - Level
 - Level and gauging
 - Tidal
 - New Forest National Park

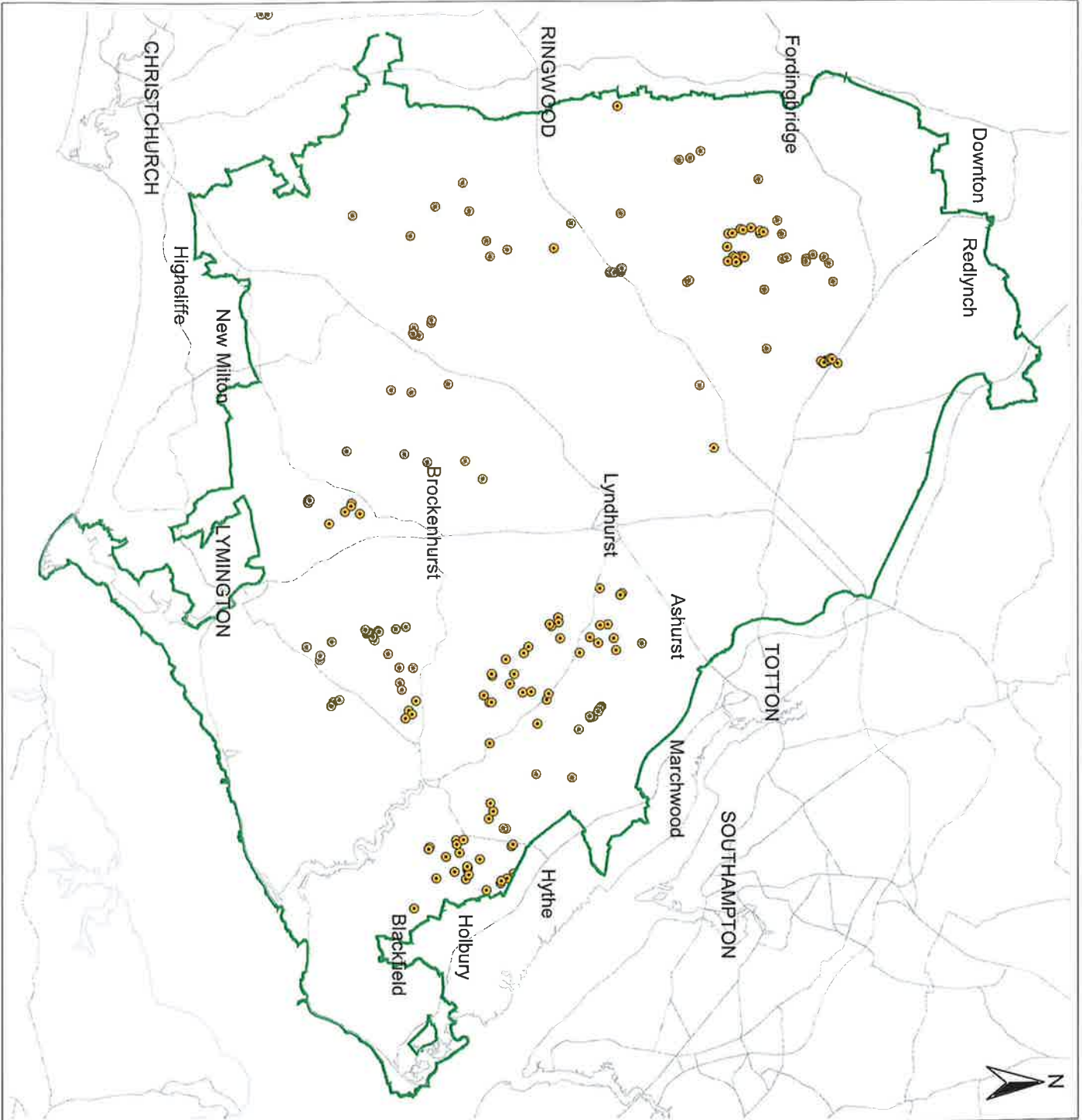
Produced by: Source

Scale: 1:130,000

Reproduced from the Ordnance Survey map with the permission of the Controller of Her Majesty's Stationery Office. Crown Copyright Reserved.

Figure 4.16
**Scheduled Ancient
Monuments**

- Legend**
-  Scheduled Ancient Monument
 -  New Forest National Park



Produced by: Date: 07 February 2006
 Scale: 1:130,000 Source: G:\Data\Info 3\FinalReport\Kapping
 Reproduced from the Ordnance Survey map with the permission of the Controller
 of Her Majesty's Stationery Office. Crown Copyright Reserved.

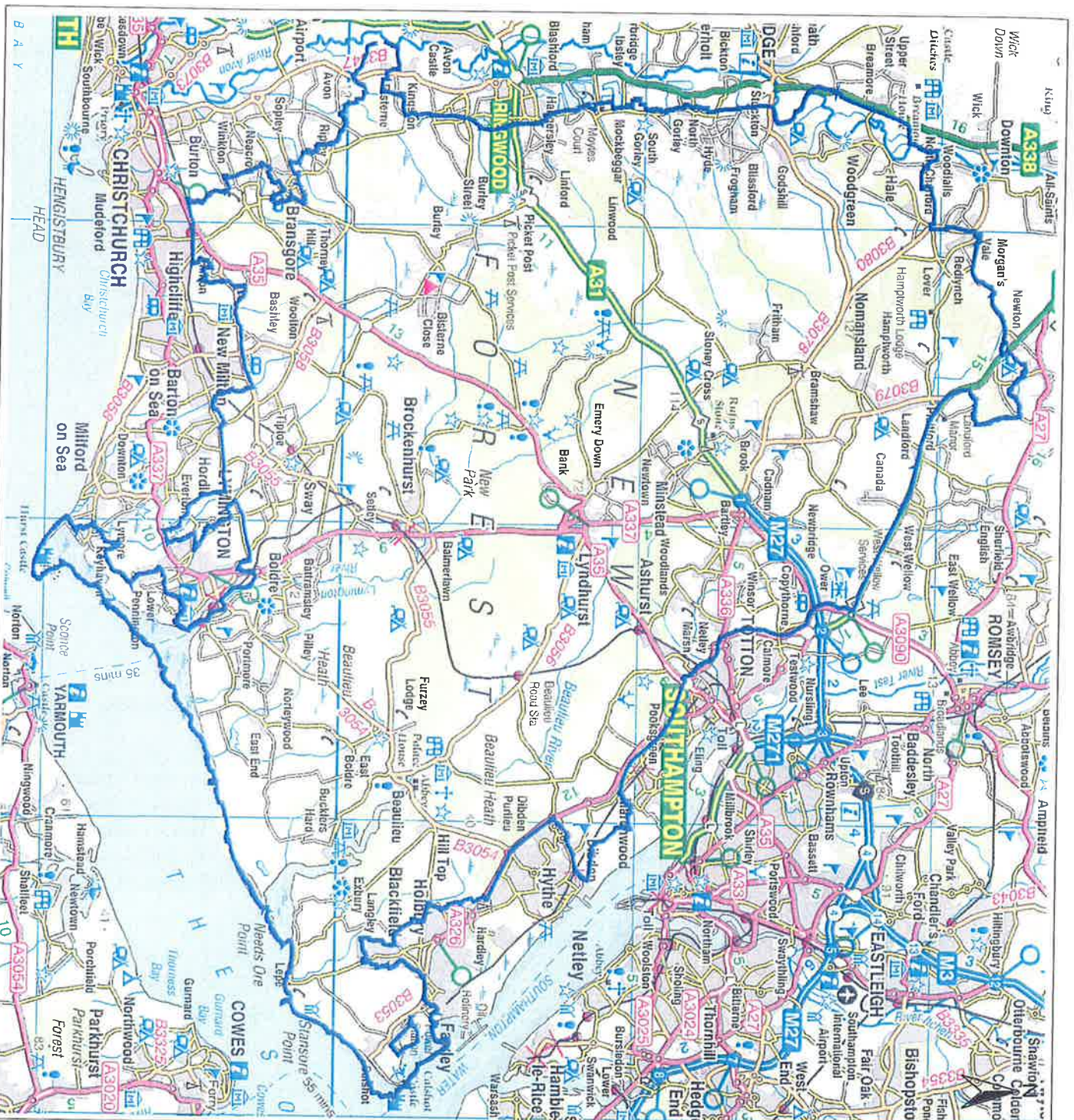


Figure 4.5

Infrastructure and Settlements



Legend

 New Forest National Park

Produced by: **Date:** 20 April 2006













Scale: 1:130,000 **Source:** GDAerial 3Drafter/Mapping

Reproduced from the Ordnance Survey map with the permission of the Controller of Her Majesty's Stationary Office. Crown Copyright Reserved.

Figure 4.6

Habitat Types

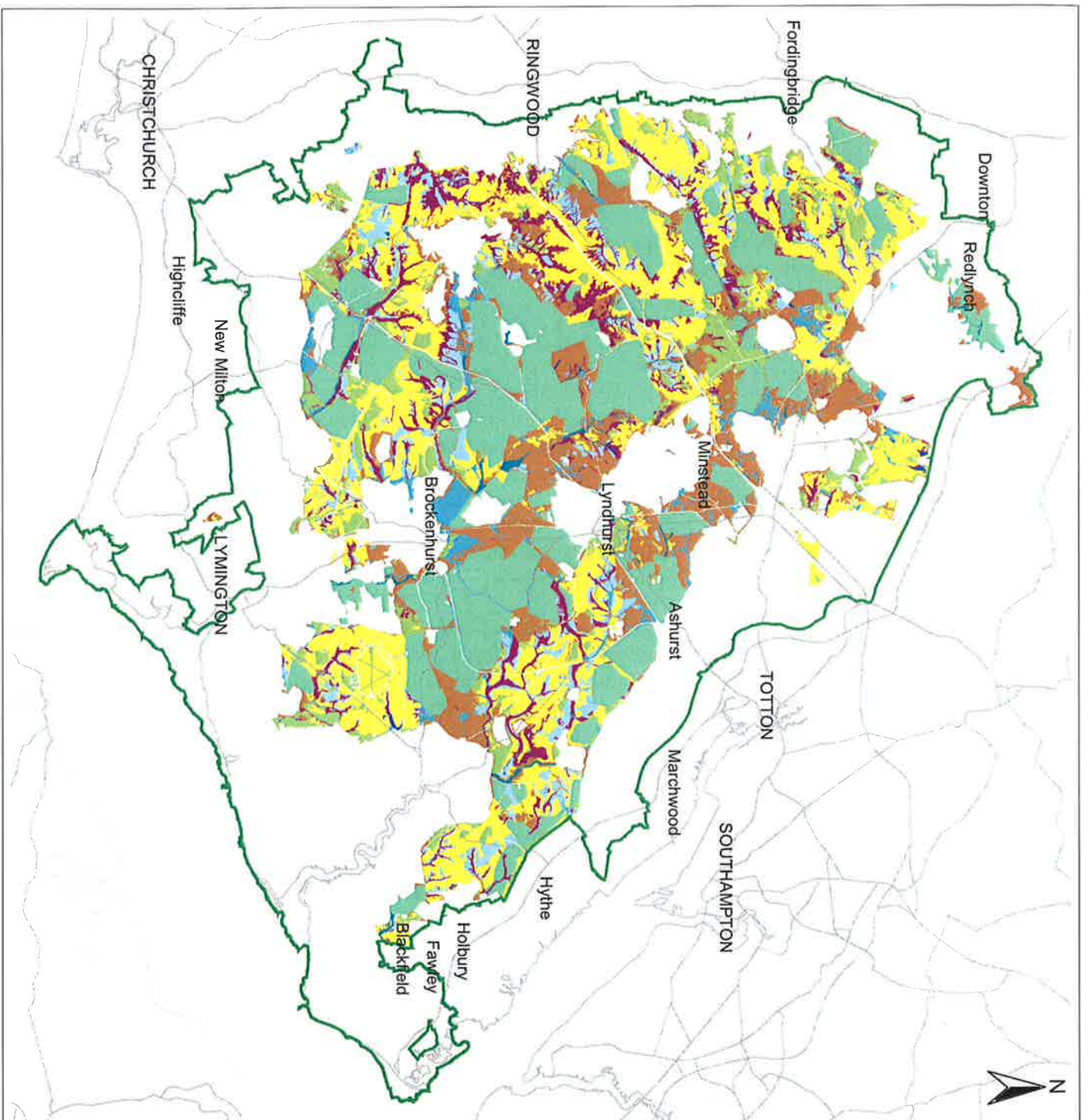
Legend

-  Bog Woodland
-  Dry Grassland
-  Dry Heath
-  Dry heath
-  Inclosure Woodland
-  Mire
-  Pasture Woodland
-  Permanent Pond
-  Riverine Woodland
-  Wet Grassland
-  Wet Heath
-  New Forest National Park

¹ Only habitat types within the New Forest Perambulation are shown

Produced by: Date: 07 February 2006

Scale: 1:130,000 Source: Ordnance Survey
 Reproduced from the Ordnance Survey map with the permission of the Controller of Her Majesty's Stationery Office. Crown Copyright Reserved.



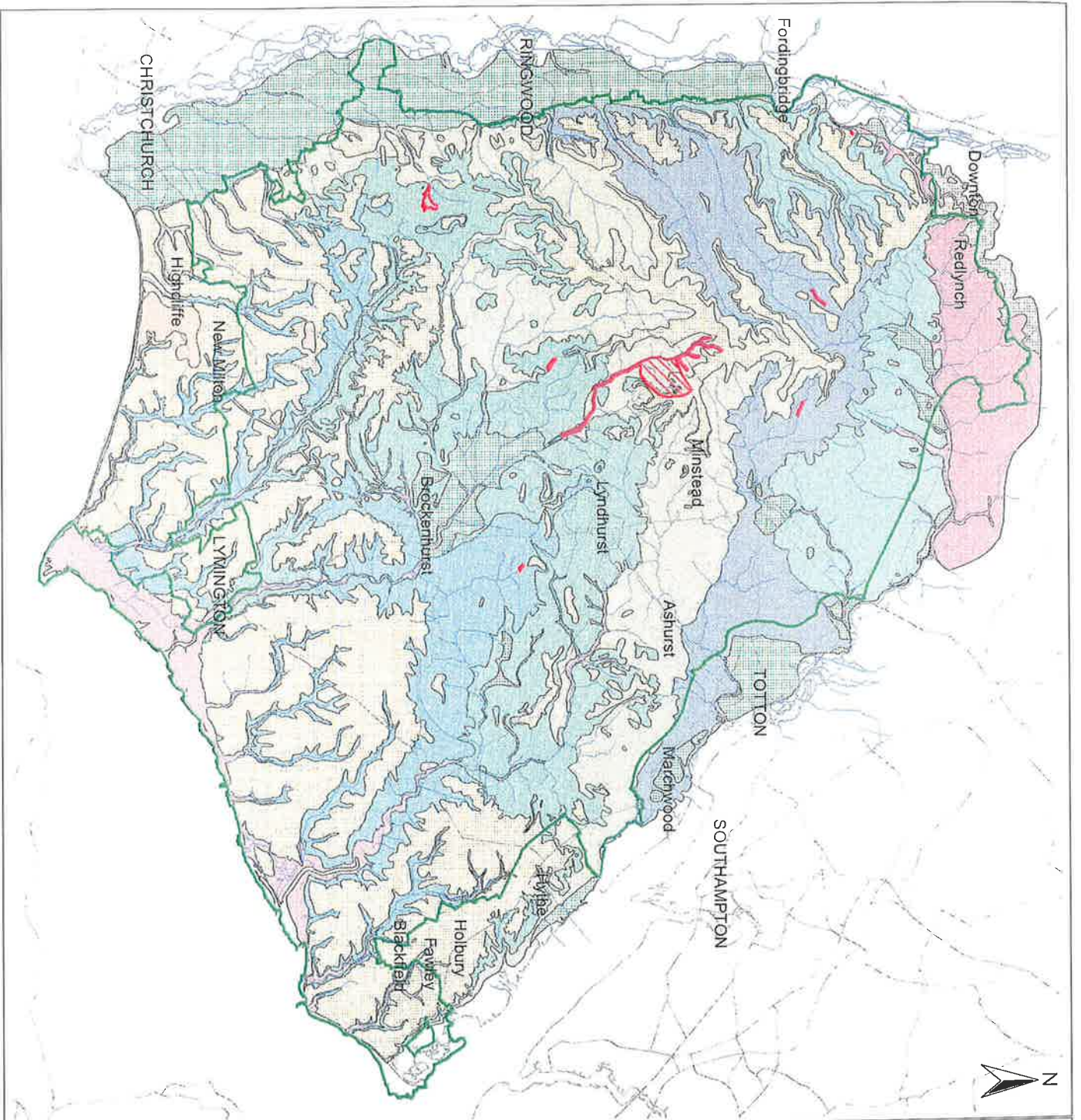


Figure 4.7

Geology



Legend

| Description |
|------------------|
| Alluvium |
| Bagshot Beds |
| Barton Clay |
| Barton Sands |
| Blown Sand |
| Bracklesham Beds |
| Brickearth |
| Headon Beds |
| London Clay |
| Peat |
| Plateau Gravel |
| Pond |
| Reading Beds |
| Shingle |
| Valley Gravel |

Sites of Geological or Physiographic Interest

New Forest National Park

Produced by: Date: 07 February 2006

Scale: 1:130,000 Source: G:\Data\Life\Strat\Report\Mapping

Reproduced from the Ordnance Survey map with the permission of the Controller of Her Majesty's Stationery Office. Crown Copyright Reserved




Figure 4.8

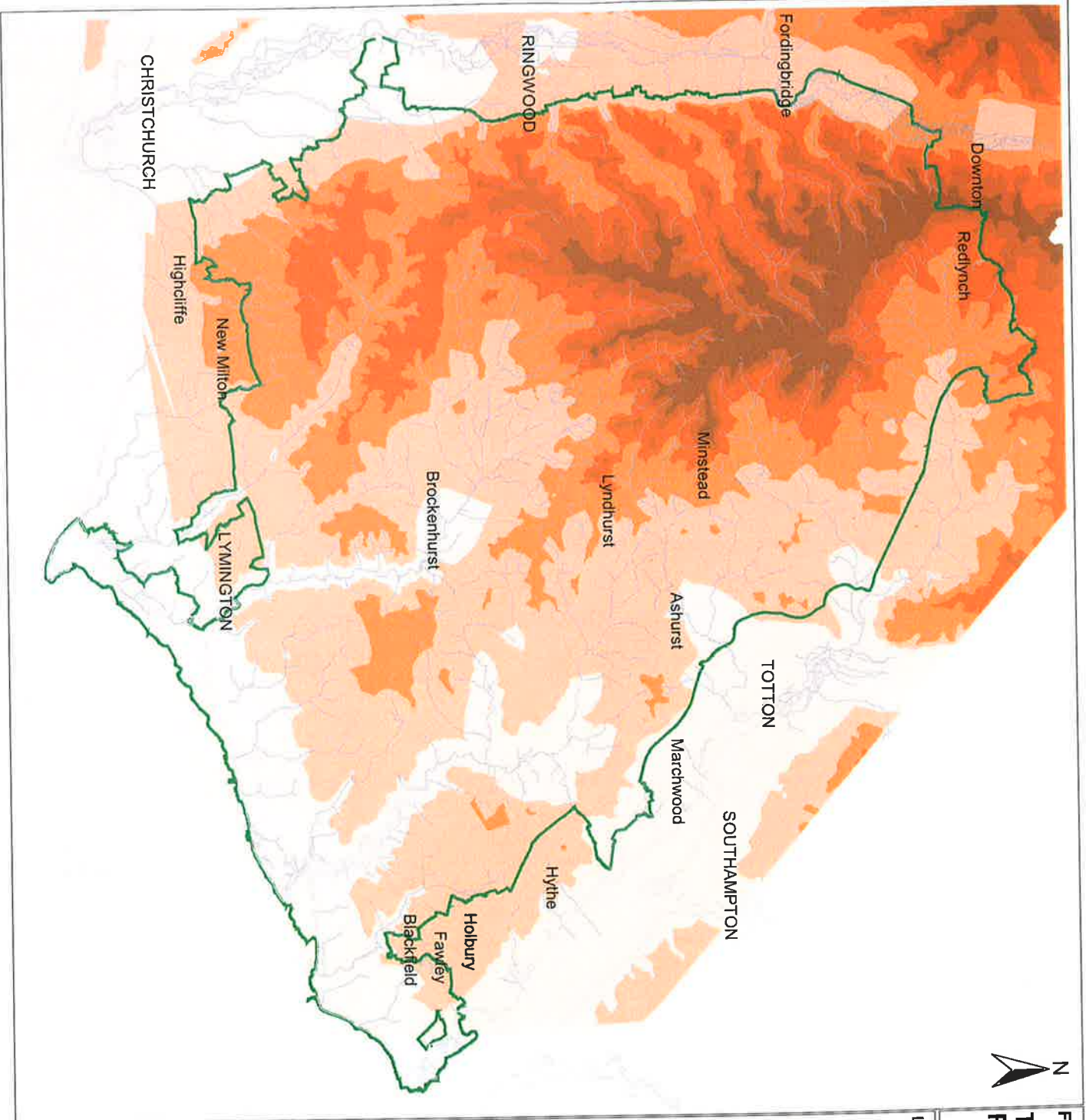
Topography and Relief



Legend

| Elevation (m) |
|---------------|
| 0 - 20 |
| 20 - 40 |
| 40 - 60 |
| 60 - 80 |
| 80 - 100 |
| 100 - 120 |

 New Forest National Park

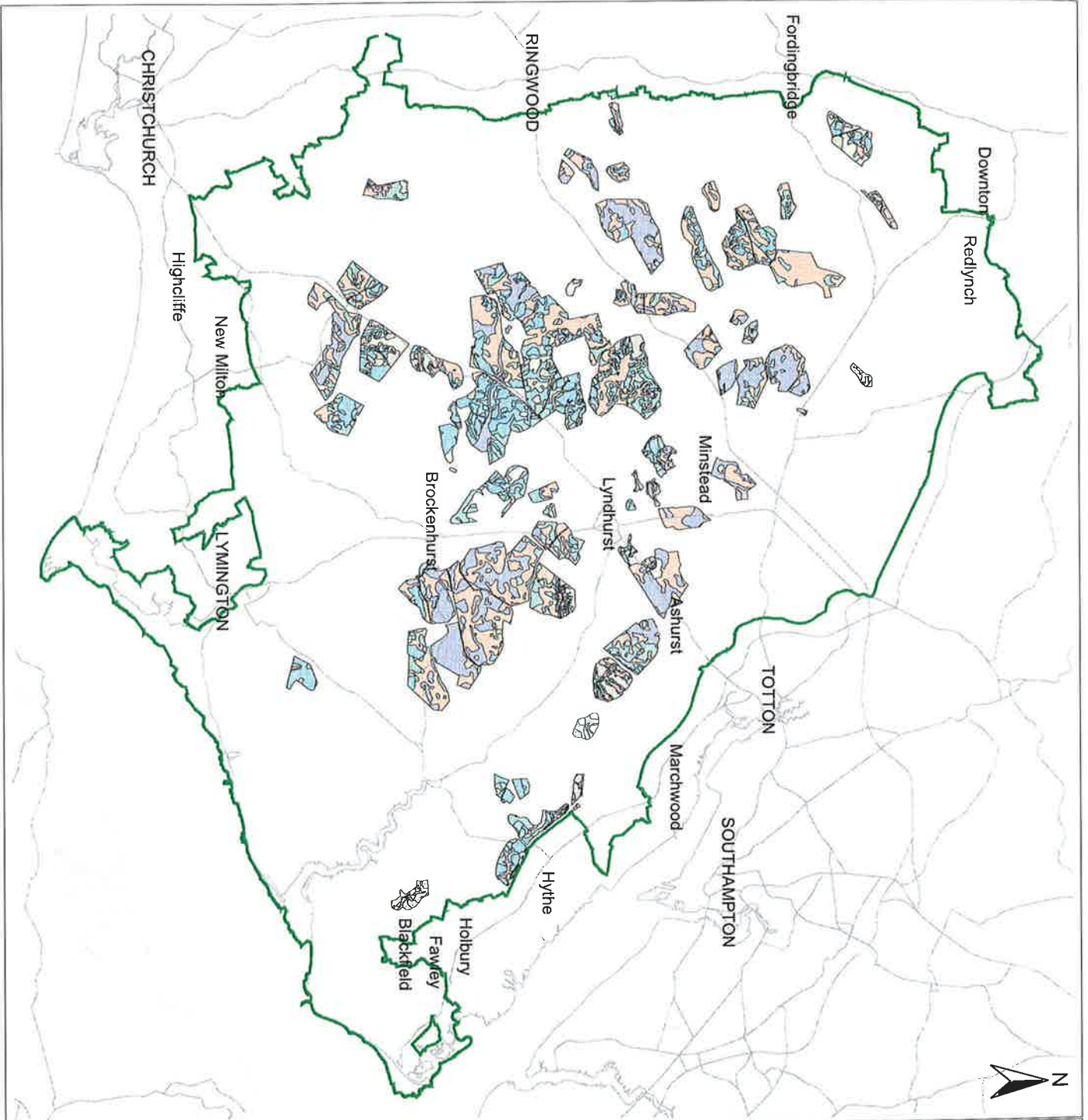


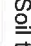










Note: Elevation not determined outside New Forest River basins

Produced by: Date: 3 May 2006

Scale: 1:130,000 Source: G:\Data\Life 3\FinalReport\mapping
Reproduced from the Ordnance Survey map with the permission of the Controller of Her Majesty's Stationery Office. Crown Copyright Reserved

Figure 4.9
Soil Types within
Incllosures



- Legend**
- Soil type**
-  Freely-drained sand
 -  Sand or loam mottled throughout
 -  Sands or gravels freely drained throughout
 -  Sands or gravels impeded in B and C horizons
 -  Slightly imperfectly drained sandy loam
 -  Straight clay
 -  Two storied soil (clay overlain by up to 20in. of gravel sand or loam).
 -  Very poorly drained light textured soils
 -  Very poorly drained light textured soils with fibrous peat
 -  Very poorly drained soils with alluvial topsoil
 -  New Forest National Park

Produced by: **Date: 07 February 2006**
 Scale: 1:130,000
 Source: G:\Data\3\FinalReport\Maping
 Reproduced from the Ordnance Survey map with the permission of the Controller
 of Her Majesty's Stationery Office. Crown Copyright Reserved.