

Figure 28

Future works Map 2



New Forest Life
PARTNERSHIP

Legend

Future works priority



Works planned to July 2006

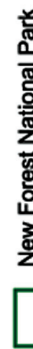


Working blocks

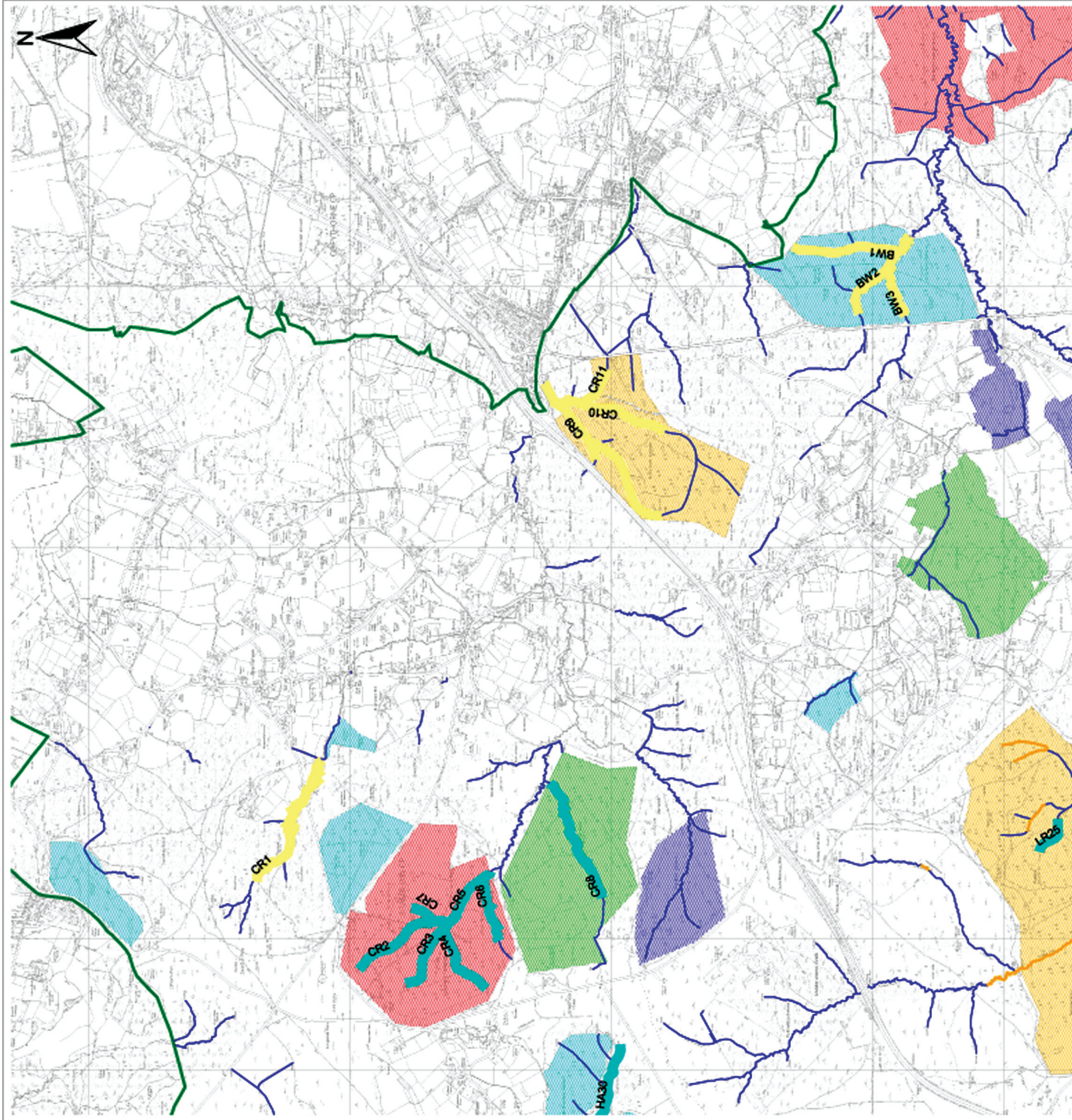
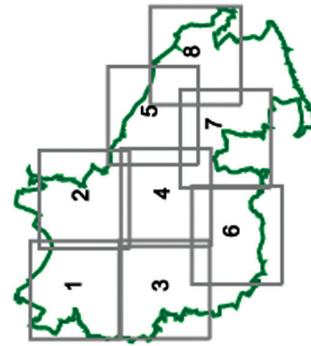
- Block 5: 2006-2007, 2012-2013
- Block 1: 2007-2008, 2013-1024
- Block 2: 2008-2009, 2015-2016
- Block 3: 2009-2010, 2016-2017
- Block 4: 2010-2011



HA1 Reach code



New Forest National Park



Produced by:

Date: 24 February 2006

Scale: 1:30,000

Reproduced from the Ordnance Survey map with the permission of the Controller of Her Majesty's Stationary Office. Crown Copyright Reserved.

Figure 29
Future works
Map 3



Legend

Future works priority

- 1
- 2
- 3

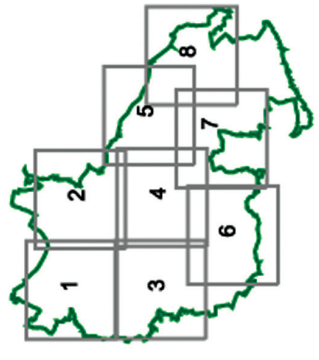
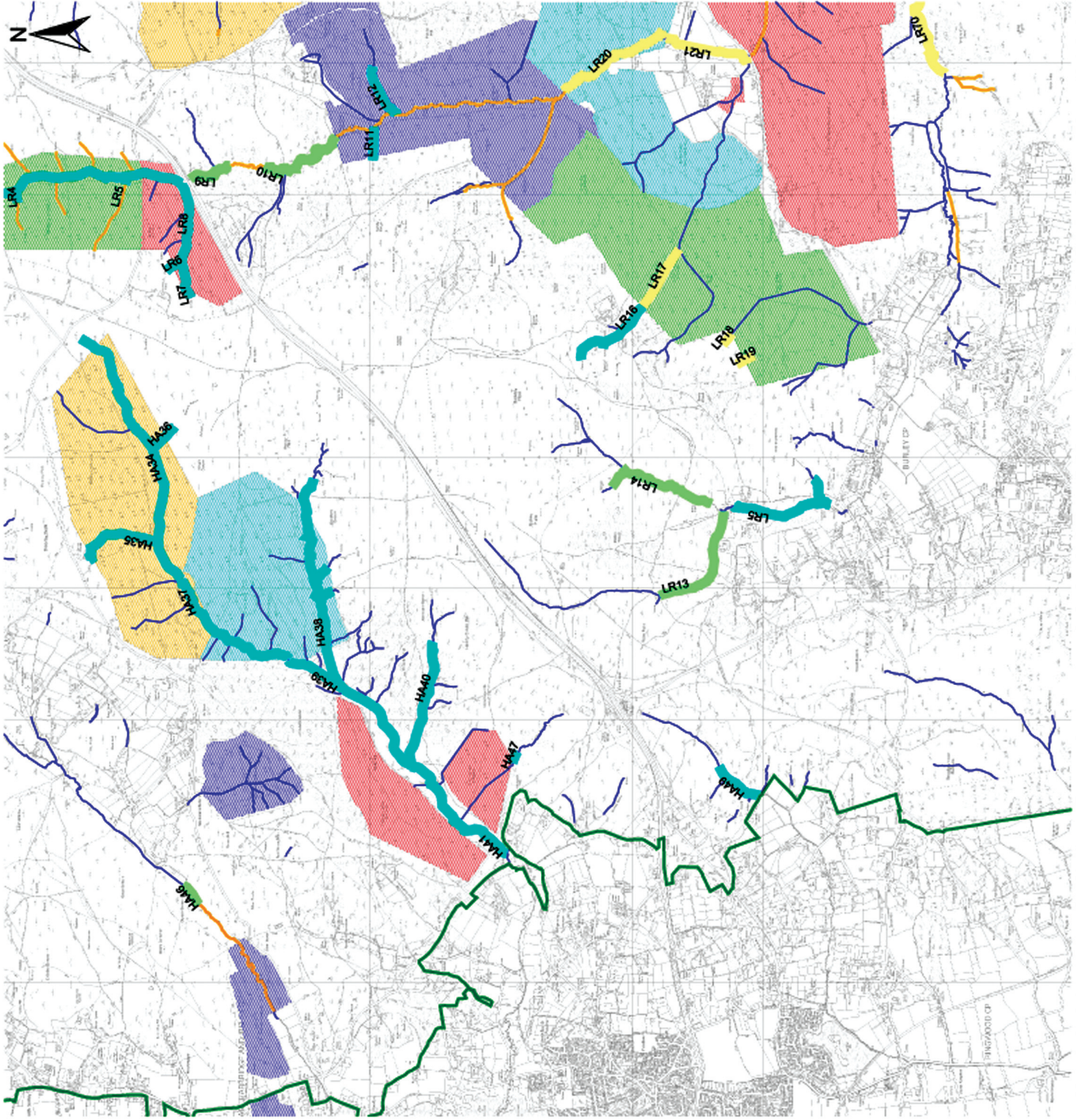
Works planned to July 2006

Working blocks

- Block 5: 2006-2007, 2012-2013
- Block 1: 2007-2008, 2013-1024
- Block 2: 2008-2009, 2015-2016
- Block 3: 2009-2010, 2016-2017
- Block 4: 2010-2011

HA1 Reach code

New Forest National Park



Produced by: **Date: 24 February 2006**
Scale: 1:30,000
Reproduced from the Ordnance Survey map with the permission of the Controller of Her Majesty's Stationery Office. Crown Copyright Reserved.

Figure 30

Future works Map 4



New Forest Life
PARTNERSHIP

Legend

Future works priority



Works planned to July 2006



Working blocks

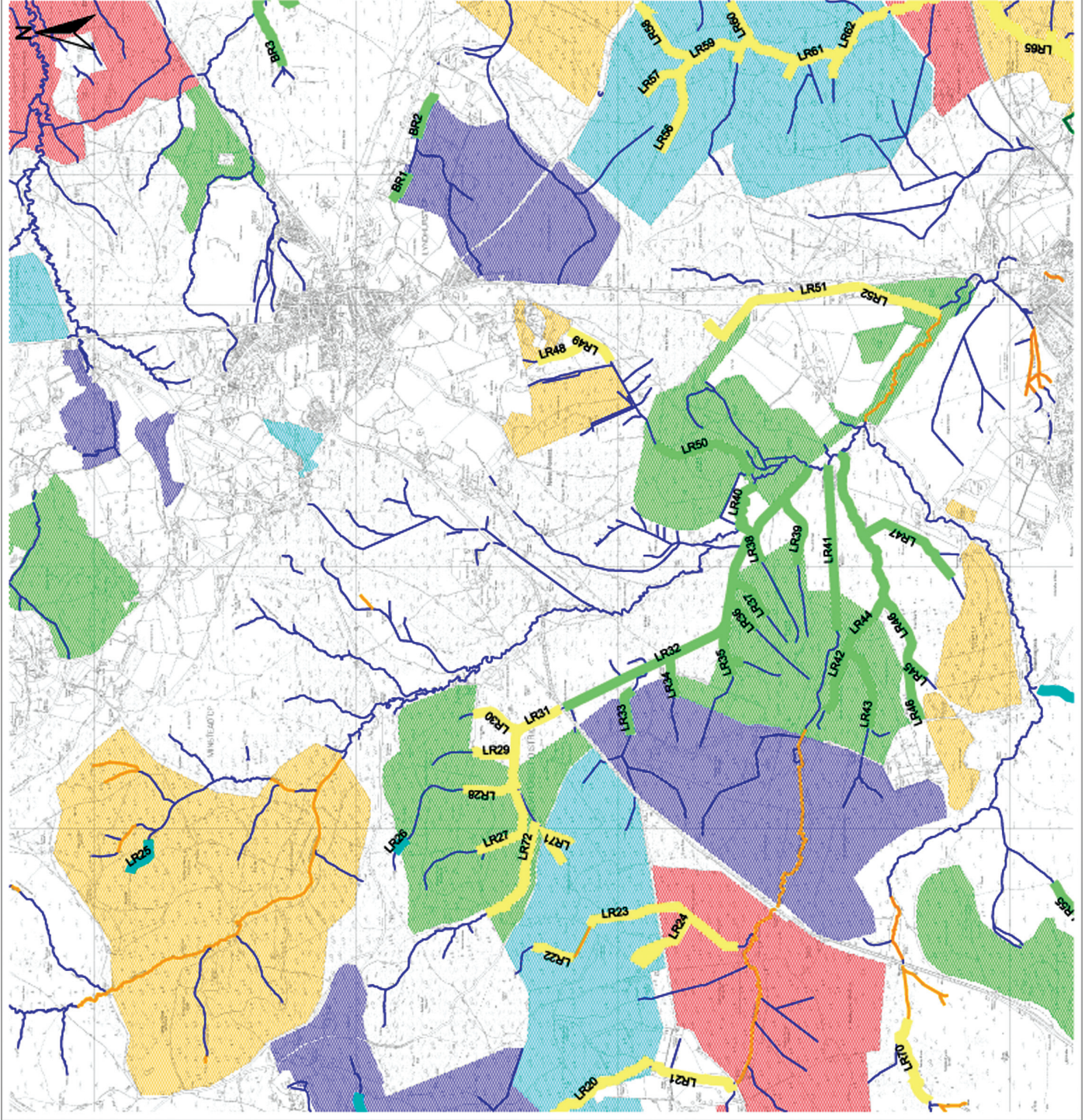
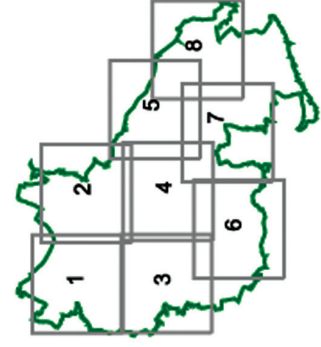
- Block 5: 2006-2007, 2012-2013
- Block 1: 2007-2008, 2013-1024
- Block 2: 2008-2009, 2015-2016
- Block 3: 2009-2010, 2016-2017
- Block 4: 2010-2011



HA1 Reach code



New Forest National Park



Produced by:

Date: 24 February 2006

Scale: 1:30,000

Reproduced from the Ordnance Survey map with the permission of the Controller of Her Majesty's Stationary Office. Crown Copyright Reserved.

Figure 31
Future works
Map 5



Legend

Future works priority

- 1
- 2
- 3

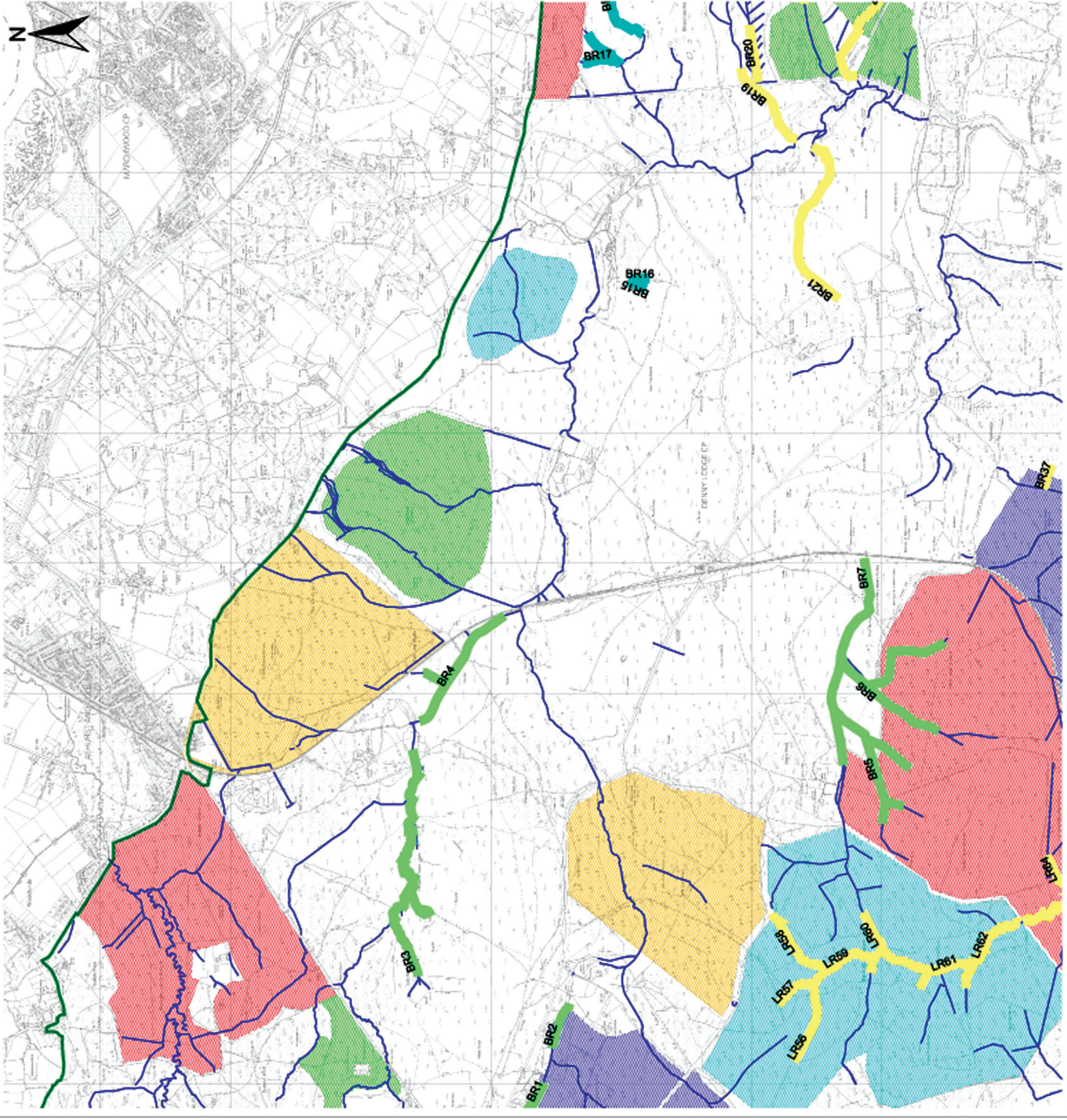
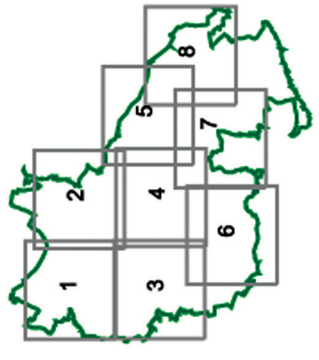
Works planned to July 2006

Working blocks

- Block 5: 2006-2007, 2012-2013
- Block 1: 2007-2008, 2013-1024
- Block 2: 2008-2009, 2015-2016
- Block 3: 2009-2010, 2016-2017
- Block 4: 2010-2011

HA1 Reach code

New Forest National Park



Produced by: _____ Date: 24 February 2006

Scale: 1:30,000

Reproduced from the Ordnance Survey map with the permission of the Controller of Her Majesty's Stationary Office. Crown Copyright Reserved.